

Form Approved: OMB No. 2120-0034

U.S. DEPARTMENT OF TRANSPORTATION FEDERAL AVIATION ADMINISTRATION FLIGHT PLAN		(FAA USE ONLY) <input type="checkbox"/> PILOT BRIEFING <input type="checkbox"/> VNR		TIME STARTED		SPECIALIST INITIALS	
		<input type="checkbox"/> STOPOVER					
1. TYPE	2. AIRCRAFT IDENTIFICATION	3. AIRCRAFT TYPE/SPECIAL EQUIPMENT	4. TRUE AIRSPEED	5. DEPARTURE POINT	6. DEPARTURE TIME		7. CRUISING ALTITUDE
VFR	N132SM	C 182/	155 KTS	MFR	PROPOSED (Z)	ACTUAL (Z)	8,000
X IFR							
DVFR							
8. ROUTE OF FLIGHT GNATS 1, MOURN, V121 EUG							
9. DESTINATION (Name of airport and city) MAHLON/SWEET FIELD, EUGENE, OR.		10. EST. TIME ENROUTE HOURS MINUTES		11. REMARKS INSTRUMENT TRAINING FLIGHT			
12. FUEL ON BOARD HOURS MINUTES		13. ALTERNATE AIRPORT(S) N/R		14. PILOT'S NAME, ADDRESS & TELEPHONE NUMBER & AIRCRAFT HOME BASE		15. NUMBER ABOARD	
				17. DESTINATION CONTACT/TELEPHONE (OPTIONAL)			
16. COLOR OF AIRCRAFT		CIVIL AIRCRAFT PILOTS. FAR Part 91 requires you file an IFR flight plan to operate under instrument flight rules in controlled airspace. Failure to file could result in a civil penalty not to exceed \$1,000 for each violation (Section 901 of the Federal Aviation Act of 1958, as amended). Filing of a VFR flight plan is recommended as a good operating practice. See also Part 99 for requirements concerning DVFR flight plans.					

FAA Form 7233-1 (8-82)

CLOSE VFR FLIGHT PLAN WITH _____ FSS ON ARRIVAL

AIRCRAFT INFORMATION

MAKE CESSNA MODEL 182
N 132SM Vso 57

AIRCRAFT EQUIPMENT/STATUS**

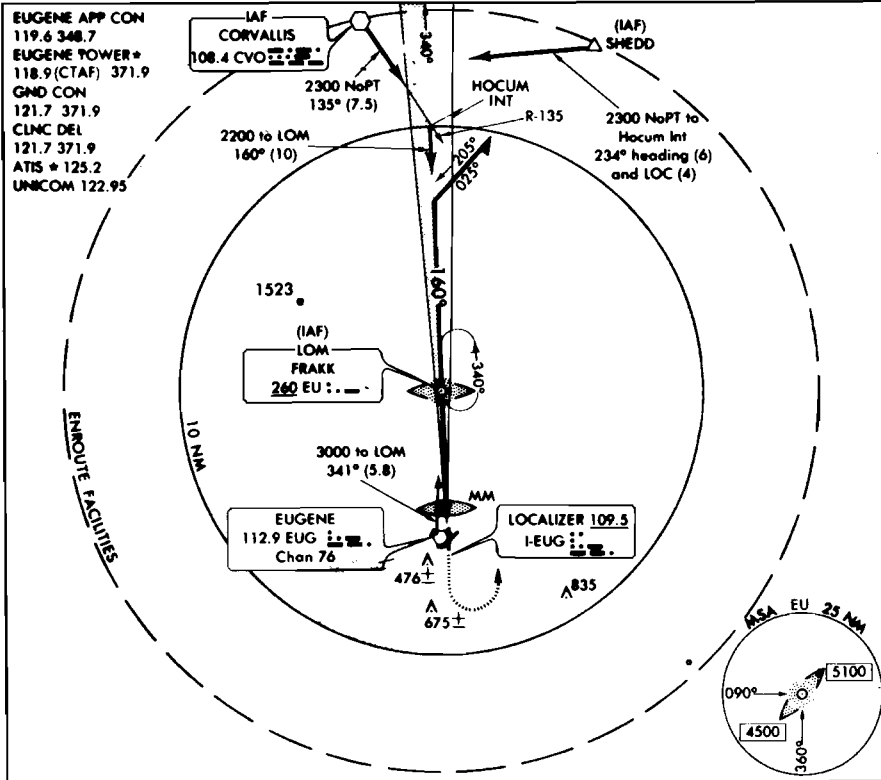
**NOTE: X= OPERATIVE INOP= INOPERATIVE N/A= NOT APPLICABLE
 TRANSPONDER: X (MODE C) X ILS: (LOCALIZER) X (GLIDE SLOPE) N/A
 VOR NO. 1 X (NO. 2) X ADF: X RNAV: N/A
 VERTICAL PATH COMPUTER: NA DME: X
 MARKER BEACON: (AUDIO) INOP (VISUAL) Inop.

FIGURE 27.—Flight Plan and Aircraft Information.

FLIGHT LOG													
MEDFORD - JACKSON CO. AIRPORT TO HAHN/SWEET FIELD, EUGENE, OR.													
CHECK POINTS		ROUTE		COURSE	WIND		SPEED-KTS		DIST NM	TIME		FUEL	
FROM	TO	ALTITUDE	TEMP		TAS	GS	LEG	TOT		LEG	TOT		
MFR	MERLI	GNATS 1 CLIMB	270°		155					:11:0			
	MOURN	V121 8000	333°			AVER. 135							
	RBG	V121 8000	287°										
	OTH	V121 8000	272°										
	EUG	APPROACH	026°										
APPROACH & LANDING		DESCENT								:10:0			
	SWEET FIELD												

<p>OTHER DATA: NOTE:</p> <p>MAG. VAR. 20° E. AVERAGE G.S. 135 KTS. FOR GNATS 1 DEPARTURE CLIMB.</p>	<p style="text-align: center;">FLIGHT SUMMARY</p> <table border="1" style="width: 100%; border-collapse: collapse;"> <thead> <tr> <th>TIME</th> <th>FUEL (LB)</th> </tr> </thead> <tbody> <tr> <td></td> <td style="text-align: center;">EN ROUTE</td> </tr> <tr> <td></td> <td style="text-align: center;">RESERVE</td> </tr> <tr> <td></td> <td style="text-align: center;">MISSED APPR.</td> </tr> <tr> <td></td> <td style="text-align: center;">TOTAL</td> </tr> </tbody> </table>	TIME	FUEL (LB)		EN ROUTE		RESERVE		MISSED APPR.		TOTAL
TIME	FUEL (LB)										
	EN ROUTE										
	RESERVE										
	MISSED APPR.										
	TOTAL										

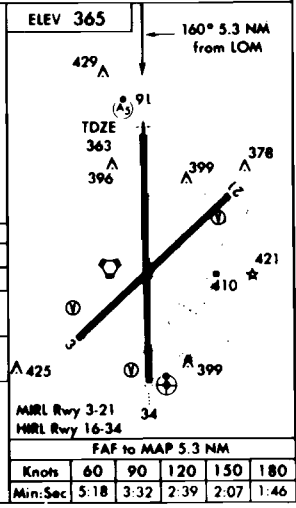
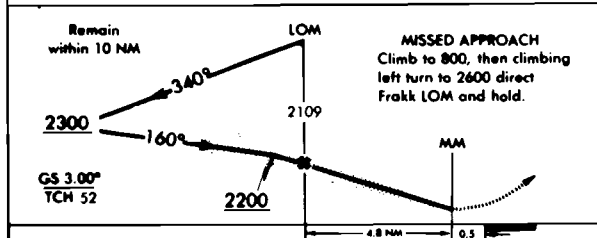
FIGURE 28.—Flight Planning Log.



EUGENE

§ MAHLON SWEET FLD (EUG) 7 NW GMT-8(-7DT) 44°07'19"N 123°13'03"W KLAMATH FALLS
 365 B S4 FUEL 100LL, JET A OX 1, 2, 3, 4 TPA—1165(800) CFR Index B H-1A, L-1B
 RWY 16-34: H6202X150 (ASPH-PFC) S-155, D-190, DT-300 HIRL IAP
 RWY 16: MALSR. RWY 34: ODALS. VASI(V4L)—GA 3.0° TCH 54'
 RWY 03-21: H5221X150 (ASPH) S-60, D-68, DT-105 MIRL
 RWY 03: VASI(V4L)—GA 3.0° TCH 50.4'. Trees. RWY 21: VASI(V4L)—GA 3.0° TCH 53.2' Trees
AIRPORT REMARKS: Attended continuously, phone 503-687-5431 between 0100-1600Z†. CAUTION—migratory waterfowl and other birds in vicinity. ACTIVATE MALSR Rwy 16 and ODALS Rwy 34—118.9, MIRL Rwy 03-21 unavailable when twr clsd. CLOSED to unscheduled air carrier operations with more than 30 passenger seats during twr closure except PPR call arpt manager 503-687-5430. Taxiways F and G closed to Part 121 opns. Terminal apron available to scheduled air carriers and flights with prior permission. Control Zone effective continuously.

COMMUNICATIONS: CTAF 118.9 ATIS 125.2 (1400-0800Z†) UNICOM 122.95
 PORTLAND FSS (PDX) LC 688-8411. NOTAM FILE EUG.
 EUGENE RCO 122.3 122.1R 112.9T (PORTLAND FSS)
 Ⓡ EUGENE APP/DEP COM 119.6 (280°-090°) 120.2 (091°-279°) (1400-0800Z†)
 Ⓡ SEATTLE CENTER APP/DEP COM 125.8 (0800-1400Z†)
 EUGENE TOWER 118.9 (1400-0800Z†) GND COM/CLNC DEL 121.7
 STAGE II SYNC ctc APP COM within 25 NM
RADIO AIDS TO NAVIGATION: NOTAM FILE EUG.
 EUGENE (M) ABOVORTAC 112.9 ■ EUG Chan 76 44°07'16"N 123°13'18"W at fld. 360/20E
 General outlook on TWEB 0600-1300Z†.
 FRAKK NDB (LOM) 260 EU 44°12'47"N 123°13'10"W 179°5.5 NM to fld.
 NDB unusable 190°-270° beyond 11 NM.
 ILS 109.5 I-EUG RWY 16 LOM FRAKK NDB
 ILS unmonitored when tower closed.



CATEGORY	A	B	C	D
S-ILS 16	563/24 200 (200-½)			
S-LOC 16	680/24 317 (400-½)		680/40 317 (400-¾)	
CIRCLING	820-1 455 (500-1)		820-1½ 455 (500-1½)	920-2 555 (600-2)

Cat. D S-LOC visibility increased to RVR 5000 for inoperative MM or MALSR.
 ACTIVATE MALSR Rwy 16 and ODALS Rwy 34-118.9.

ILS RWY 16 44°07'N-123°13'W EUGENE OREGON
 EUGENE/MAHLON SWEET FIELD (EUG)

FIGURE 29.—ILS RWY 16 (EUG) and Excerpt from Airport /Facility Directory.

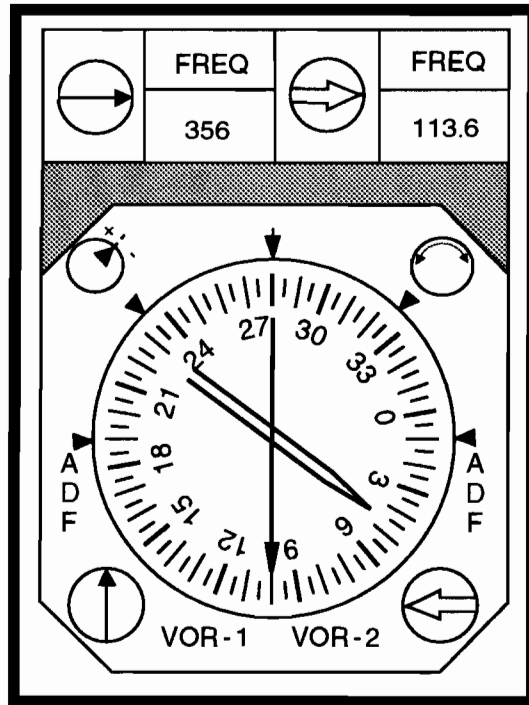


FIGURE 30A.—RMI Indicator.

